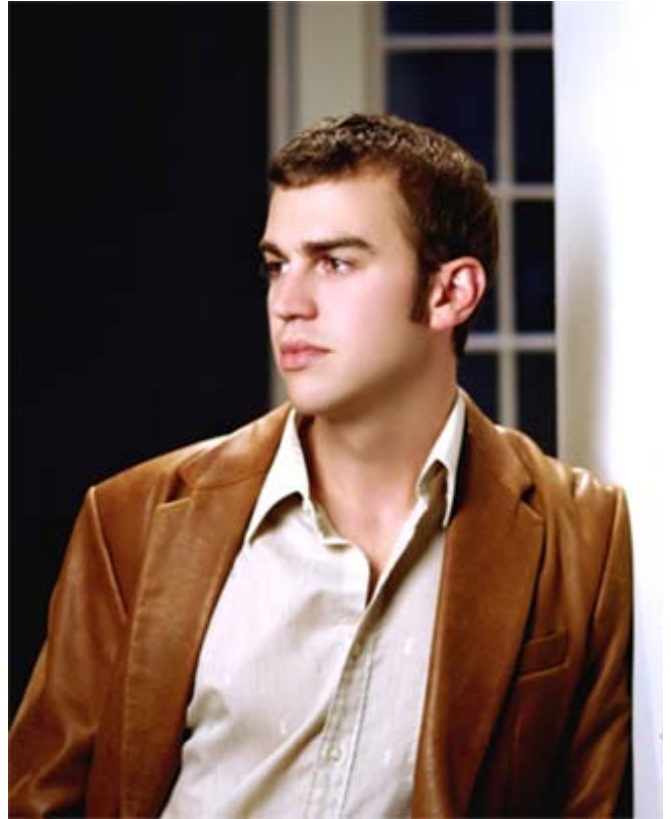


# SPENCER DAY



---

## SPENCER DAY

---

While many peg him as a throwback for his clever, stylish, carefully crafted singing and piano work, **Spencer Day's** songs owe as much to Icelandic alt-rock princess **Bjork** as they do the timeless compositions of **Ravel**. It helps explain why **Day's** music feels classic but modern. In his 26 years, the San Francisco based singer has grown equal loves for Brill Building songcraft and more guttural, modern era rock passion. And that's core to the ongoing evolution of his sound. **The San Francisco Chronicle** wrote: "Norah Jones and Michael Buble, meet you new competition: A young hunk who can croon the old tunes and some very solid originals.† This kid can sing!" Meanwhile, **SF Weekly** noted, "What makes the twenty-something's vocal stylings special is **Day's** lack of affected cool, that Frank Sinatra/hepcat shtick that so many other male vocalists feel the need to mimic when singing selections from the American songbook."



Innovative Entertainment Talent Agency

2525 16th Street, Suite 304 San Francisco, CA 94103 Tel: 415-552-4276 Fax: 415-552-3545 [www.inn-entertainment.com](http://www.inn-entertainment.com)